

28 November 2019 at 7.00 pm

Conference Room, Argyle Road, Sevenoaks



Improvement & Innovation Advisory Committee

At the above stated meeting the attached documents were tabled for the following items

	Pages	Contact
7. LG Inform	(Pages 1 - 22)	Lee Banks Tel: 01732 227161

If you wish to obtain further factual information on any of the agenda items listed above, please contact the named officer prior to the day of the meeting.

Should you need this agenda or any of the reports in a different format, or have any other queries concerning this agenda or the meeting please contact Democratic Services on 01732 227000 or democratic.services@sevenoaks.gov.uk.

This page is intentionally left blank

Basic facts about Sevenoaks broken down by Ward



Written by LGA Research from Local Government Association

Basic facts about Sevenoaks broken down by Ward

This report provides a summary of the latest available information on the demographic and socio-economic make-up of the 26 wards in Sevenoaks. It looks at the population structure and provides information on the economic, housing and educational achievement of each ward.

This sample report is one of a series of reports available from the Local Government Association's LG Inform Plus service. Other free reports include demographic and economic profiles of individual wards and health and wellbeing profiles which enable a side by side comparison of all ward(s) in Sevenoaks.

With a subscription to LG Inform Plus there are many more reports about your area available to you. You can also see detailed maps, charts, tables and reports about any of nearly 1500 metric types from the LG Inform Plus database showing information about as the population, health, economy and facilities in your area (and much more).

A subscription also allows you to create your own tables, charts and maps for ward(s) and other areas within your authority's boundary, or build a custom area report using the full set of national and local data stored in our database, as well as giving you access to many other useful tools.

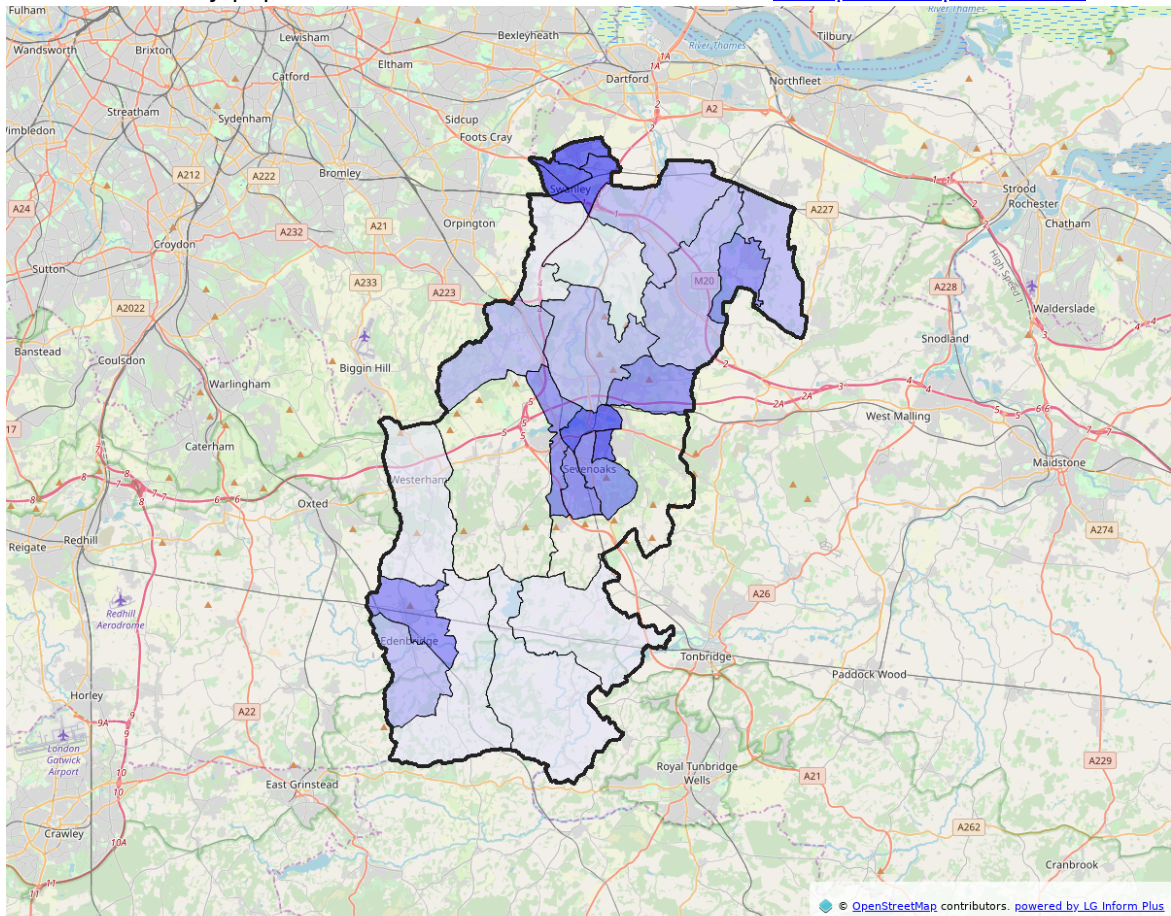
To find out more about our service please telephone 020 7664 3001 or email: lginformplus@local.gov.uk.

Geography and population

Here is a breakdown of Sevenoaks giving the area, population size and gender split of each ward.

The total area of Sevenoaks district is [36,923.08 hectares](#). The ward with the largest area is Penshurst, Fordcombe and Chiddingstone, representing 10.87% of the total area of all Wards in the district.

The most densely populated ward is Swanley St Mary's with [42.10 persons per hectare](#), the least densely populated ward is Cowden and Hever with [0.77 persons per hectare](#).



Population density (2018)

- $\geq 13.42 \leq 42.10$ persons per hectare
- $\geq 4.68 < 13.42$ persons per hectare
- $\geq 2.09 < 4.68$ persons per hectare
- $\geq 0.77 < 2.09$ persons per hectare

Agenda Item 7

The total resident population of Sevenoaks in 2018 was [120,293](#). By 2039 the population in Sevenoaks is projected to be [142,448](#). The ward with the largest population is Sevenoaks Town and St John's, representing 6.05% of the total population of all wards in Sevenoaks.

	Geographical area, land only measurements	Total population	Total female population	Total male population
	2018	2018	2018	2018
	Hectares	People	People	People
Ash and New Ash Green	668.44	6,065	3,152	2,913
Brasted, Chevening and Sundridge	no value	6,724	3,468	3,256
Cowden and Hever	2,741.22	2,112	1,034	1,078
Crockenhill and Well Hill	1,003.19	1,940	985	955
Dunton Green and Riverhead	675.94	5,959	3,049	2,910
Edenbridge North and East	964.41	5,065	2,570	2,495
Edenbridge South and West	1,238.72	4,629	2,406	2,223
Eynsford	1,570.00	1,886	992	894
Farningham, Horton Kirby and South Darenth	2,016.24	5,140	2,617	2,523
Fawkham and West Kingsdown	2,261.31	6,025	3,031	2,994
Halstead, Knockholt and Badgers Mount	1,601.61	3,414	1,697	1,717
Hartley and Hodsoil Street	1,309.58	6,040	3,123	2,917
Hextable	237.00	4,045	2,074	1,971
Kemsing	894.67	4,243	2,181	2,062
Leigh and Chiddingstone Causeway	2,513.61	2,297	1,188	1,109
Otford and Shoreham	2,030.26	4,721	2,429	2,292
Penshurst, Fordcombe and Chiddingstone	3,190.74	2,554	1,310	1,244
Seal and Weald	no value	4,327	2,301	2,026
Sevenoaks Eastern	126.14	4,282	2,187	2,095
Sevenoaks Kippington	390.28	5,178	2,621	2,557
Sevenoaks Northern	336.36	4,657	2,405	2,252
Sevenoaks Town and St John's	621.91	7,273	3,805	3,468
Swanley Christchurch and Swanley Village	378.10	6,173	3,153	3,020
Swanley St Mary's	111.01	4,674	2,410	2,264

	Geographical area, land only measurements	Total population	Total female population	Total male population
	2018	2018	2018	2018
	Hectares	People	People	People
Swanley White Oak	187.13	6,396	3,400	2,996
Westerham and Crockham Hill	2,288.71	4,474	2,296	2,178

NOTE: Mid-year population figures at Ward level have not yet been published for 2017.

Age

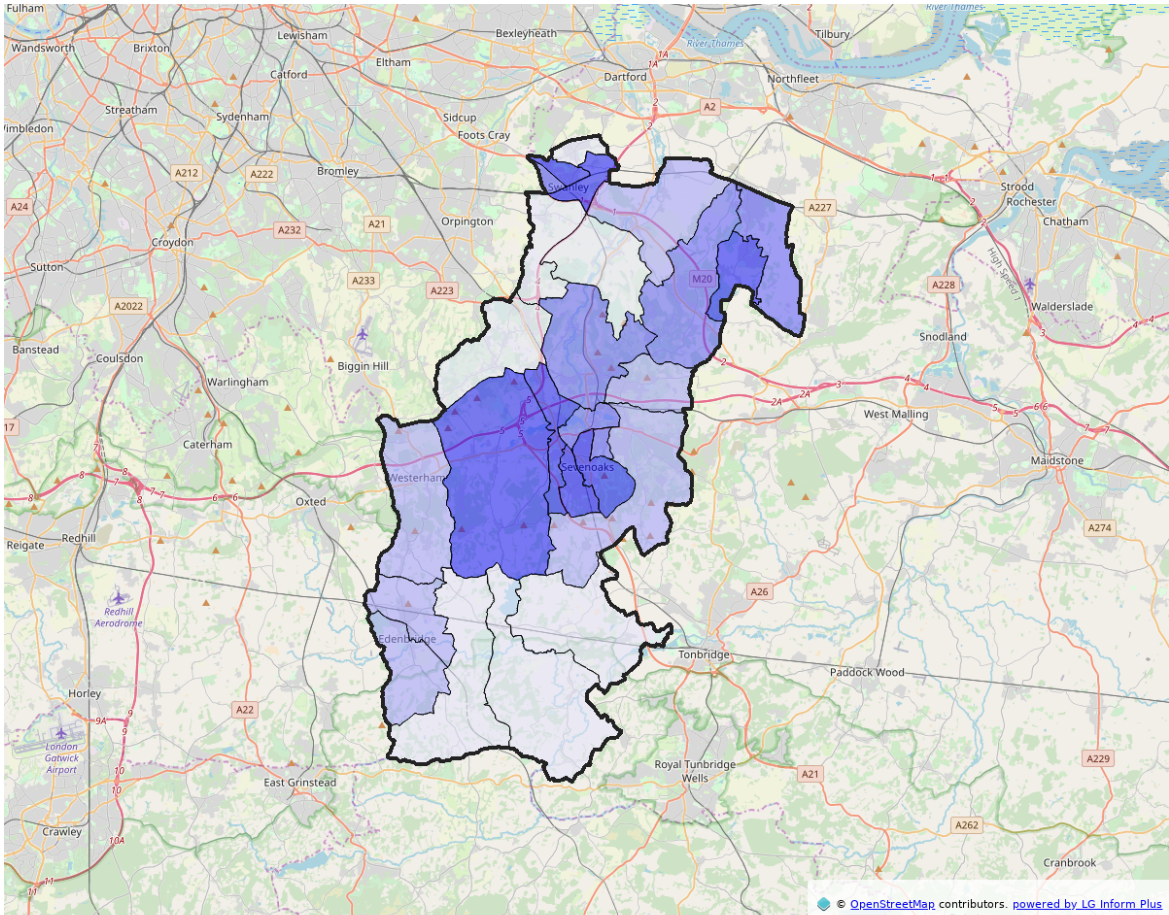
This table gives a broad age breakdown by ward in Sevenoaks. Sevenoaks Kippington ward has the highest proportion of the population who are in the 0-15 age group, which represents 4.73% of the total population within the ward.

Hartley and Hodsoll Street ward has the highest number of people aged 65 and over representing 5.48% of the total population of the Ward.

	Population aged 0-15	Population aged 16-64	Population aged 65 and over (count)
	2018	2018	2018
	People	People	People
Ash and New Ash Green	1,241	3,574	1,250
Brasted, Chevening and Sundridge	1,432	3,822	1,470
Cowden and Hever	359	1,304	449
Crockenhill and Well Hill	306	1,155	479
Dunton Green and Riverhead	1,435	3,746	778
Edenbridge North and East	1,007	2,917	1,141
Edenbridge South and West	975	2,793	861
Eynsford	321	1,059	506
Farningham, Horton Kirby and South Darenth	921	3,127	1,092
Fawkham and West Kingsdown	888	3,284	1,853
Halstead, Knockholt and Badgers Mount	615	1,968	831
Hartley and Hodsoll Street	928	3,239	1,873
Hextable	644	2,454	947
Kemsing	870	2,323	1,050
Leigh and Chiddingstone Causeway	474	1,397	426
Otford and Shoreham	985	2,618	1,118

Agenda Item 7

	Population aged 0-15	Population aged 16-64	Population aged 65 and over (count)
	2018	2018	2018
	People	People	People
Penshurst, Fordcombe and Chiddingstone	505	1,465	584
Seal and Weald	920	2,523	884
Sevenoaks Eastern	1,019	2,496	767
Sevenoaks Kippington	1,240	2,943	995
Sevenoaks Northern	1,127	2,778	752
Sevenoaks Town and St John's	1,557	4,276	1,440
Swanley Christchurch and Swanley Village	1,196	3,750	1,227
Swanley St Mary's	1,051	2,861	762
Swanley White Oak	1,261	3,824	1,311
Westerham and Crockham Hill	871	2,665	938



Dependent children: All ages (2011)

- ≥ 669 ≤ 805
- ≥ 551 < 669
- ≥ 487 < 551
- ≥ 199 < 487

This map shows numbers of households with dependent children for all Wards in Sevenoaks.

Brasted, Chevening and Sundridge is the ward with the highest number of households (805) with dependent children in the district and Eynsford is the ward with the lowest number of households with dependent children (199).

Ethnicity

This table shows the ethnic mix of each ward in Sevenoaks. Sevenoaks Town and St John's ward has the highest number of Asian / Asian British residents in the ward.

Swanley St Mary's ward has the highest number of Black / African / Caribbean /Black British residents in Sevenoaks.

Agenda Item 7

	Resi- dents who are White	Residents who are Mixed/multi- ple ethnic groups	Residents who are Asian/Asian British	Residents who are Black/African/ Caribbean/Black British	Residents who are Other ethnic group
	2011	2011	2011	2011	2011
	People	People	People	People	People
Ash and New Ash Green	5,970	76	77	31	11
Brasted, Chevening and Sundridge	6,189	98	87	13	11
Cowden and Hever	2,013	20	10	4	2
Crockenhill and Well Hill	1,858	26	11	13	1
Dunton Green and Riverhead	4,715	94	136	17	32
Edenbridge North and East	4,473	61	46	17	15
Edenbridge South and West	4,137	85	56	13	4
Eynsford	1,769	16	22	7	0
Farningham, Horton Kirby and South Dar- enth	4,623	89	49	44	6
Fawkham and West Kings- down	5,888	52	94	23	5
Halstead, Knockholt and Badgers Mount	3,368	58	44	6	9
Hartley and Hodsoll Street	5,617	46	147	10	15
Hextable	3,973	31	62	24	2
Kemsing	4,128	31	50	6	3
Leigh and Chiddingstone Causeway	2,150	33	17	3	1
Otford and Shoreham	4,489	43	49	12	2
Penshurst, Fordcombe and Chidding- stone	2,408	41	15	0	3
Seal and Weald	4,066	47	52	19	10
Sevenoaks Eastern	3,922	72	94	16	4

	Resi- dents who are White	Residents who are Mixed/multi- ple ethnic groups	Residents who are Asian/Asian British	Residents who are Black/African/ Caribbean/Black British	Residents who are Other ethnic group
	2011	2011	2011	2011	2011
	People	People	People	People	People
Sevenoaks Kippington	4,629	87	107	24	11
Sevenoaks Northern	4,224	74	134	9	11
Sevenoaks Town and St John's	6,084	157	285	30	19
Swanley Christchurch and Swanley Village	5,334	64	139	179	28
Swanley St Mary's	3,958	96	134	185	5
Swanley White Oak	5,739	107	106	124	28
Westerham and Crockham Hill	4,305	71	62	24	13

Agenda Item 7

Housing

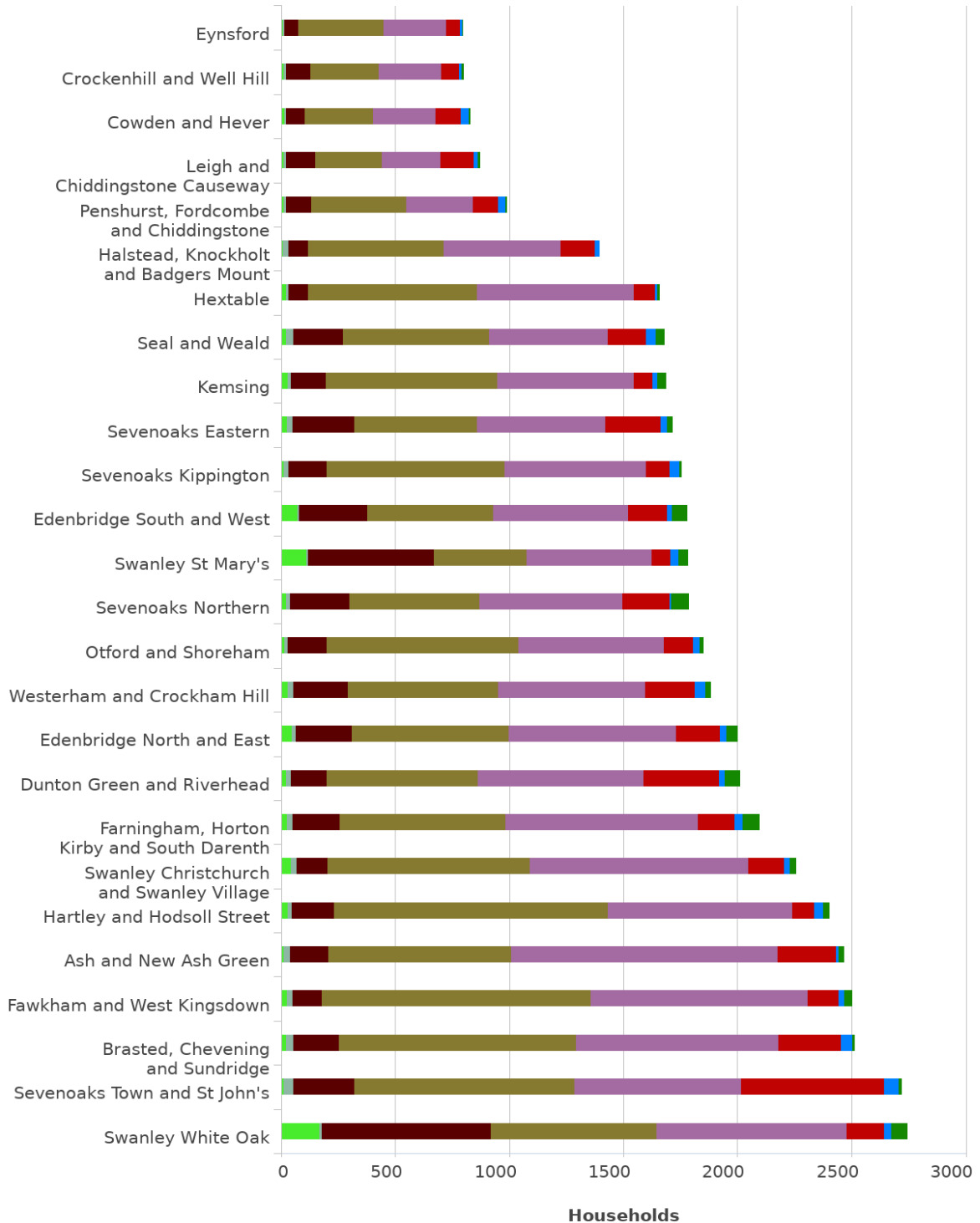
In 2011 there were [47,020](#) households in Sevenoaks and this chart shows the households of each ward in Sevenoaks broken down by tenure. Swanley White Oak ward has [167](#) households rented from the council, which is the highest number for any ward in Sevenoaks.

Swanley White Oak ward has [741](#) households of other types of social renting, which is the highest number for any ward in Sevenoaks.

NOTE: If the district you are reporting on has more than 30 wards the chart will show the 30 with the highest total number of households.

Households by tenure (count) (Count) (2011) for Wards of Sevenoaks (District)

source: Census 2011



Powered by LG Inform Plus

Agenda Item 7

Employment

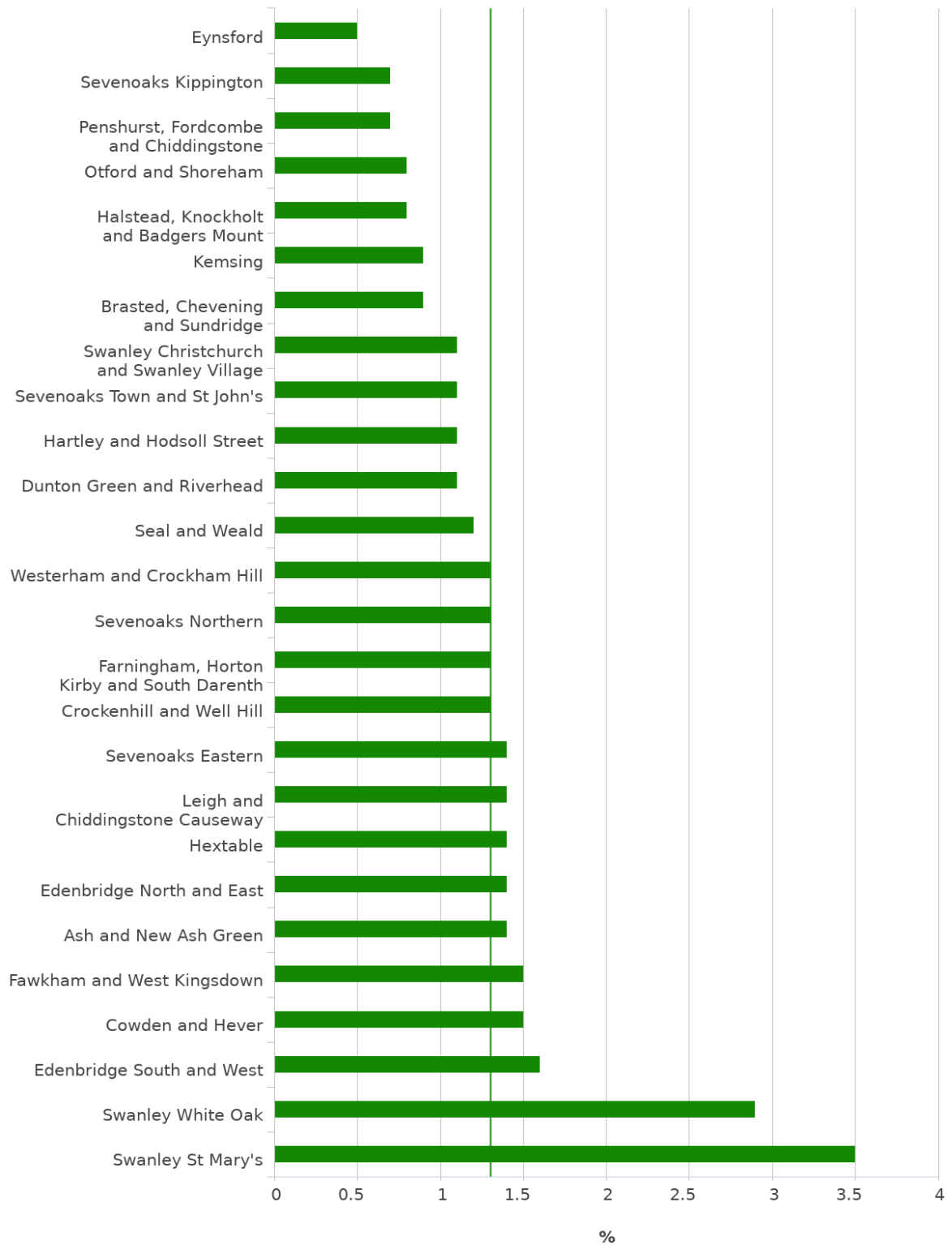
The Overall employment rate (working-age) in Sevenoaks was [83.0%](#) in 2019 Q2 (12 months ending) compared to [77.8%](#) in Kent and [79.0%](#) in South East.

Swanley St Mary's ward has the highest percentage of residents in Sevenoaks who are claiming unemployment benefit. .

The bar chart below shows the percentage claiming unemployment benefit for each ward in Sevenoaks against the average for the district.

NOTE: If the district contains more than 30 wards the report will show the 30 with the highest percentage of claimants aged 16+.

Proportion of residents aged 16-64 claiming unemployment related benefits (%) (Oct 2019) for Wards of Sevenoaks (District)
 source: Claimant count by sex and age



■ Claimant count aged 16+ (% of population aged 16+), Oct 2019
 — Claimant count aged 16+ (% of population aged 16+), Mean for Sevenoaks Wards, Oct 2019

Powered by LG Inform Plus

Education

The 2011 Census recorded the educational achievement of residents; this chart shows the proportion of residents split by each ward reporting to have no qualifications.

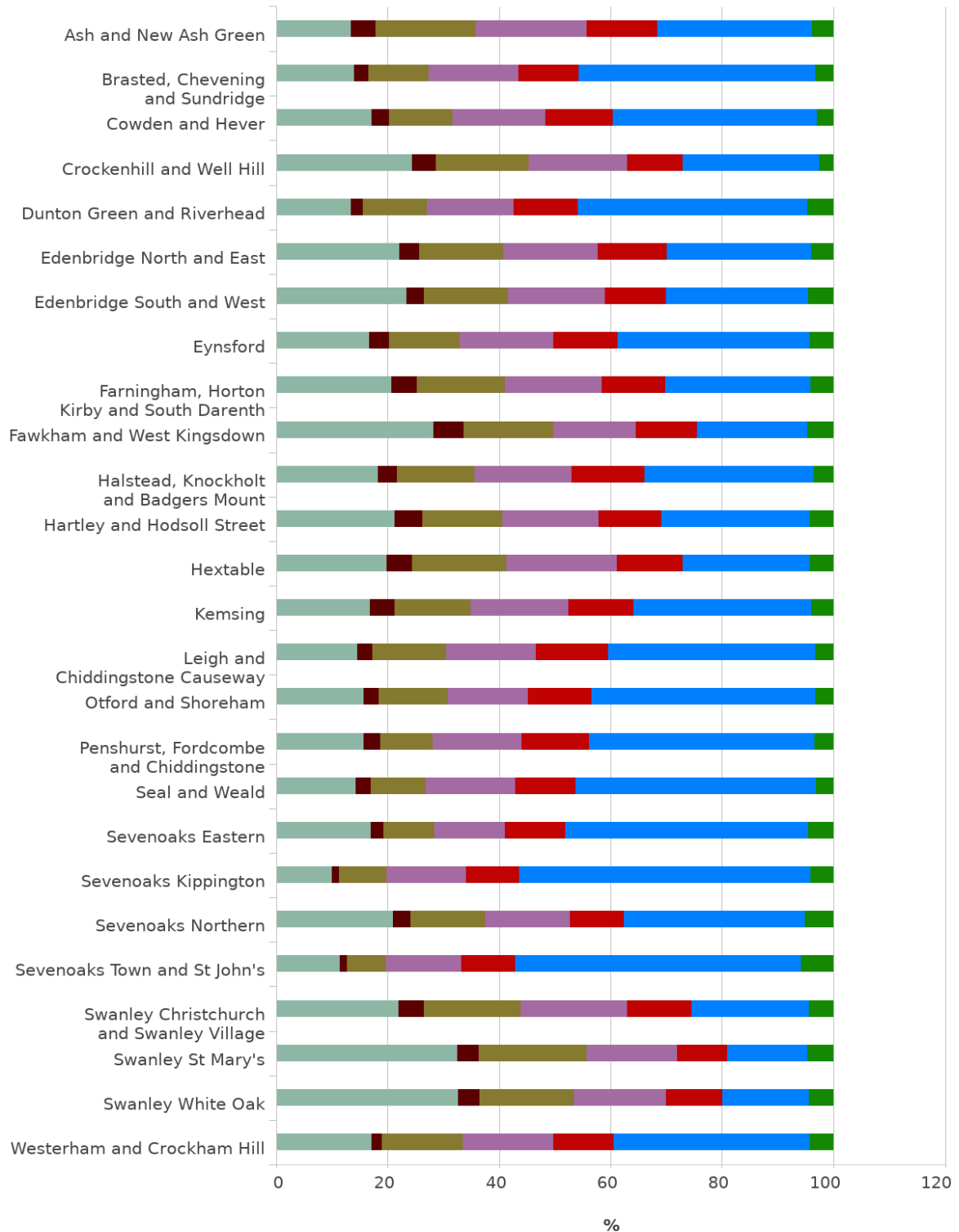
Swanley White Oak ward has the highest percentage of residents in Sevenoaks who have no qualifications ([32.60%](#)) compared to [19.20%](#) for Sevenoaks as a whole.

NOTE: If the district in your report has more than 30 wards the chart will show the first 30 in alphabetical order of name.

Agenda Item 7

Residents by educational qualifications (%) (Percentage of ONS population count) (2011) for Wards of Sevenoaks (District)

source: Census 2011



■ Other qualifications (%), 2011
 ■ Level 4 qualifications and above (%), 2011
■ Level 3 qualifications (%), 2011
 ■ Level 2 qualifications (%), 2011
■ Level 1 qualifications (%), 2011
 ■ Apprenticeship (%), 2011
 ■ No qualifications (%), 2011

Powered by LG Inform Plus

Health

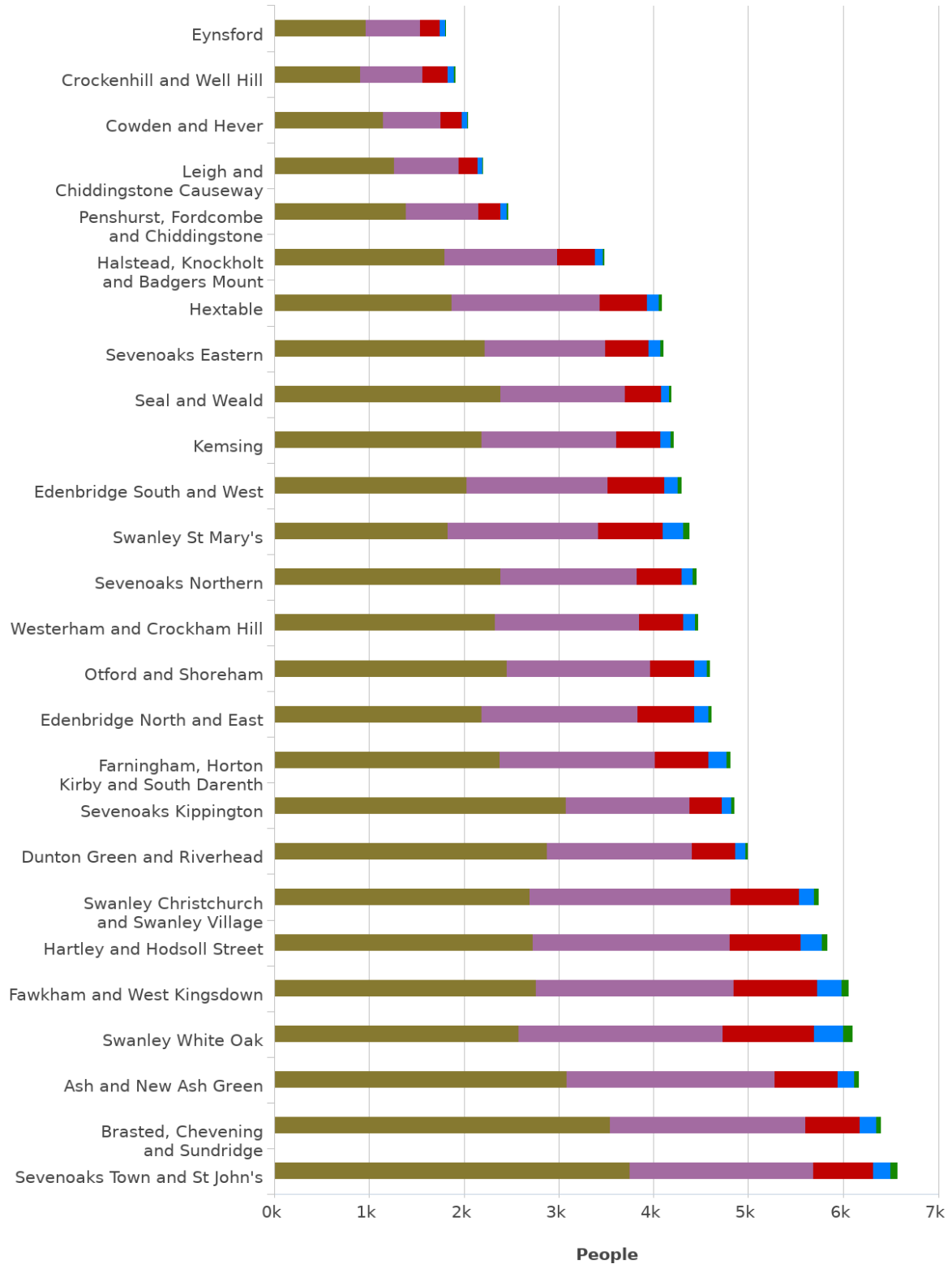
This chart shows the general health of residents by each ward in Sevenoaks, as self-reported in the last Census. Swanley White Oak ward has the highest percentage of residents in Sevenoaks who report they are in very bad health ([1.6%](#)).

NOTE: If the district of your report contains more than 30 wards the chart will show the 30 with the largest overall population.

Agenda Item 7

Wards of Sevenoaks (District)

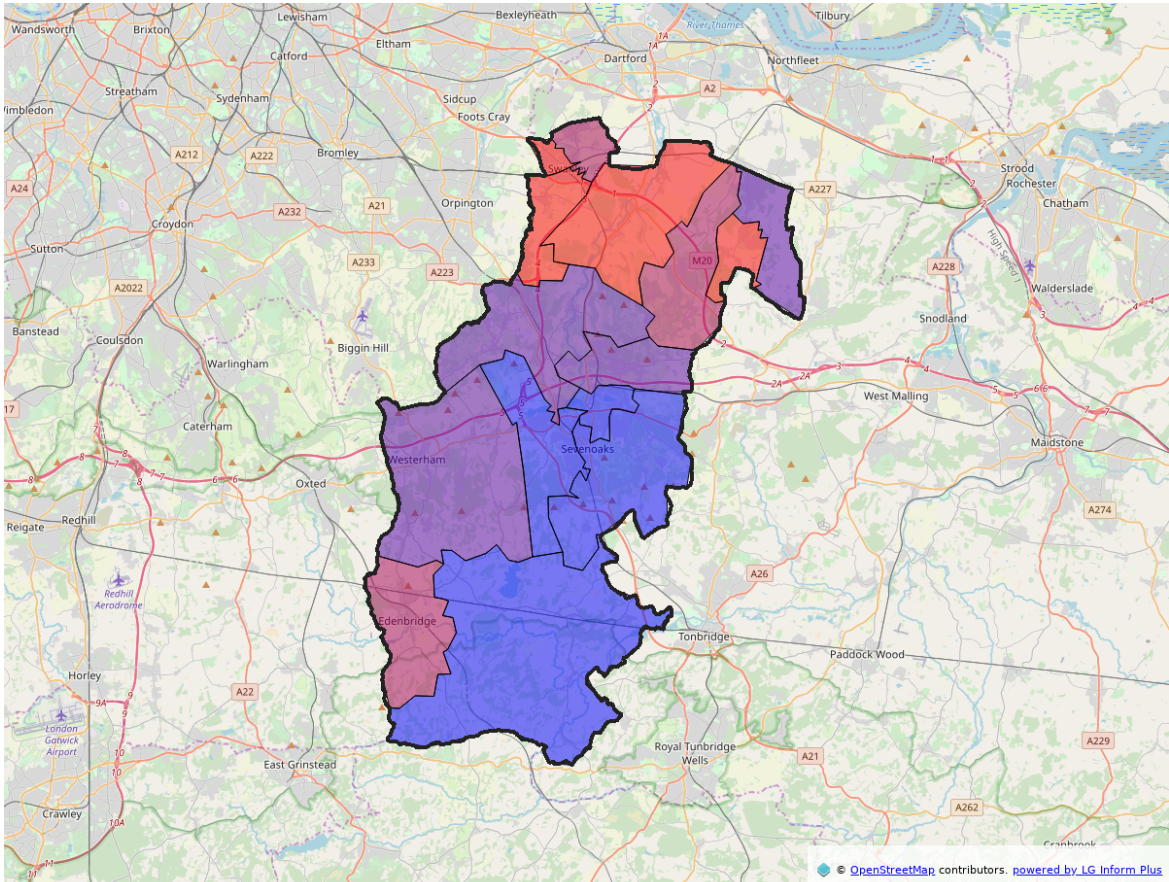
source: Census 2011



■ Very bad health, 2011
 ■ Bad health, 2011
 ■ Fair health, 2011
 ■ Good health, 2011
 ■ Very good health, 2011

Powered by LG Inform Plus

The map shows the % of measured children in year 6 classified as obese for each MSOA in Sevenoaks District for the 2015/16-17/18 (academic) year.



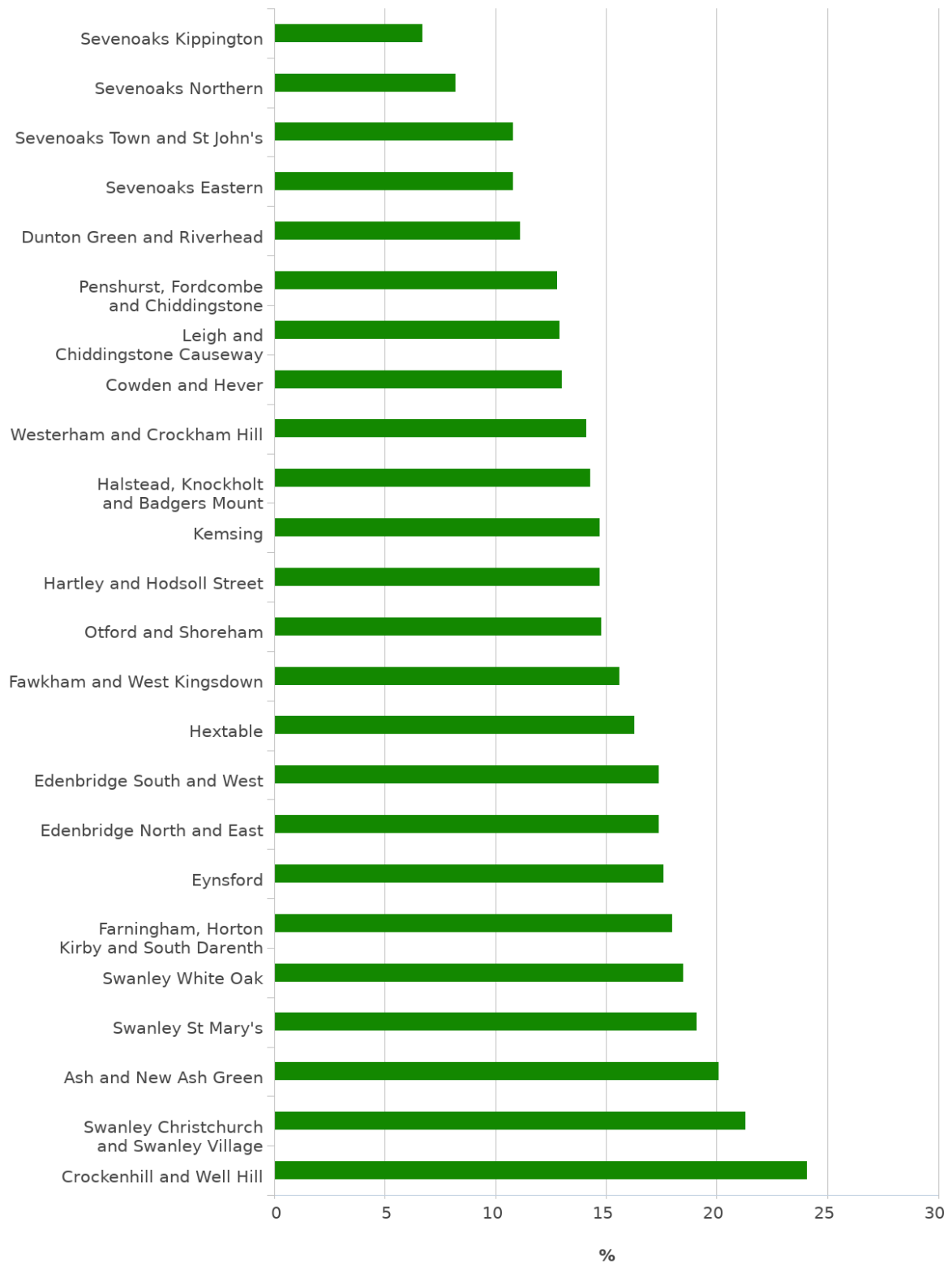
**Obese children in year 6 (%) (2015/16-17/18
(academic))**

- $\geq 5.0 \leq 13.3 \%$
- $> 13.3 \leq 14.8 \%$
- $> 14.8 \leq 17.7 \%$
- $> 17.7 \leq 23.4 \%$

Agenda Item 7

% of measured children in year 6 classified as obese (%) (2015/16-17/18 (academic)) for Wards of Sevenoaks (District)

source: Child obesity and excess weight: small area level data



Obese children in year 6 (%), 2015/16-17/18 (academic)

Powered by LG Inform Plus

NOTE: If the district contains more than 30 wards the report will show the 30 with the highest percentage obese children in year 6

Further information

This is a sample report which provides a selection of information about wards within your district. To get more information and create charts, tables and maps for your own reports, you could consider subscribing to LG Inform Plus. See <http://about.esd.org.uk/subscription-benefits> or contact the LG Inform Plus team at lginformplus@local.gov.uk with any queries. Subscriptions go towards supporting the sustainability of the local government information standards and LG Inform Plus tools for the benefit of the whole sector.

References

This report was generated using data from:

[Nomis; Annual Population Survey](#)

[Nomis; Claimant count by sex and age](#)

[Office for National Statistics; Census 2011](#)

[Office for National Statistics; Mid-year estimates](#)

[Office for National Statistics; Population projections: 2014-based projections](#)

[Office for National Statistics; UK Standard Area Measurements \(SAM\)](#)

[Public Health England; Child obesity and excess weight: small area level data](#)

This page is intentionally left blank